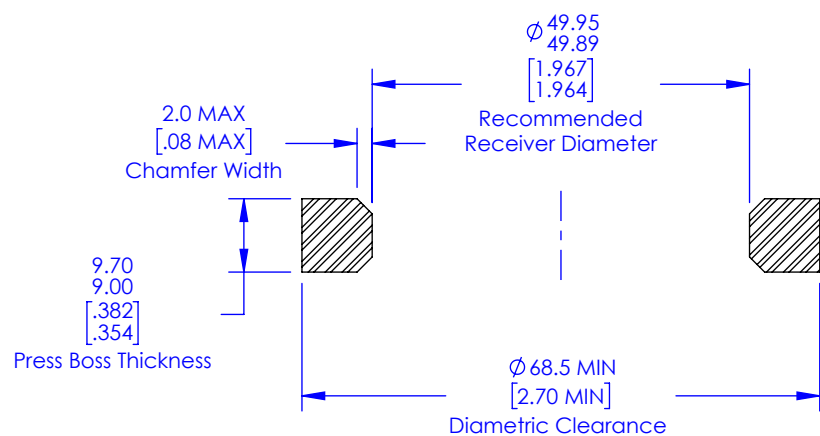
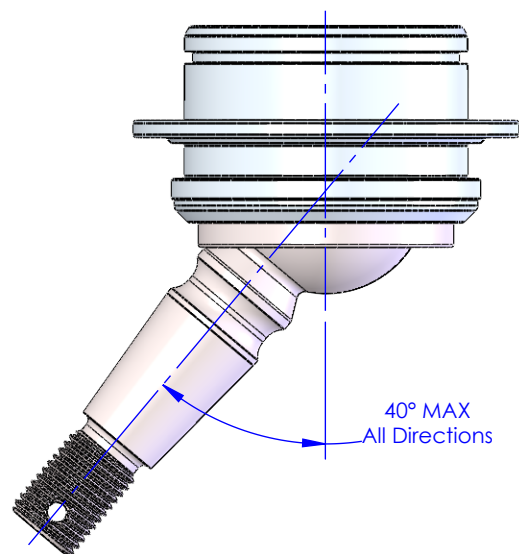


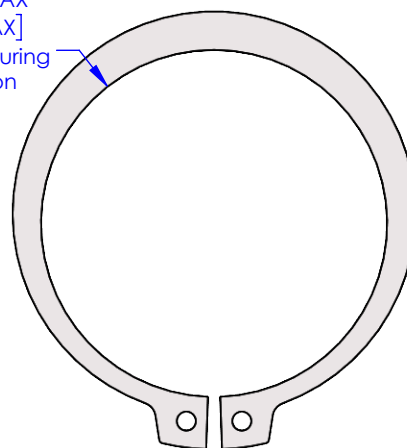
## Recommended Press Boss Dimensions



## Articulation Limit

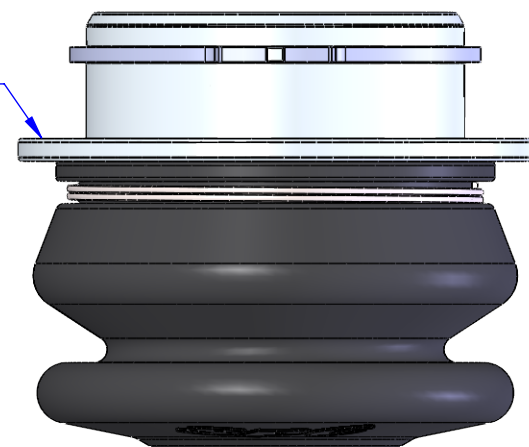


$\phi 50.50$  MAX  
[1.988 MAX]  
Expansion During  
Installation

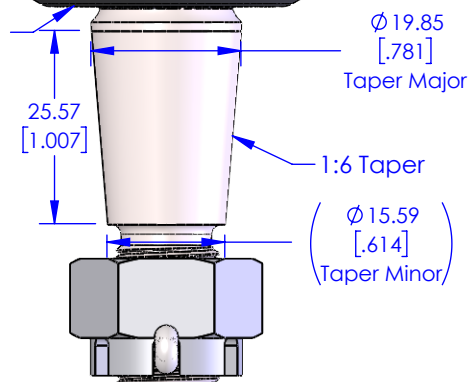


## 15225 Kit, Ball Joint Cartridge w/ Hardware

Press flange  
shall be pressed  
flush with press boss



Boot designed to be spaced  
away from knuckle



**Specialty Products Company**  
Longmont, Colorado USA • [www.specprod.com](http://www.specprod.com)

**PROPRIETARY AND CONFIDENTIAL**

THIS DOCUMENT CONTAINS PROPRIETARY INFORMATION WHICH SHALL NOT BE REPRODUCED, TRANSFERRED TO OTHER DOCUMENTS, DISCLOSED TO OTHERS, USED FOR MANUFACTURING, OR ANY OTHER PURPOSE WITHOUT PRIOR WRITTEN PERMISSION FROM SPECIALTY PRODUCTS COMPANY

## 15225 Kit, Ball Joint Cartridge w/ Hardware

**INFO SHEET**

Rev. **A**

Mass (g): 678.78