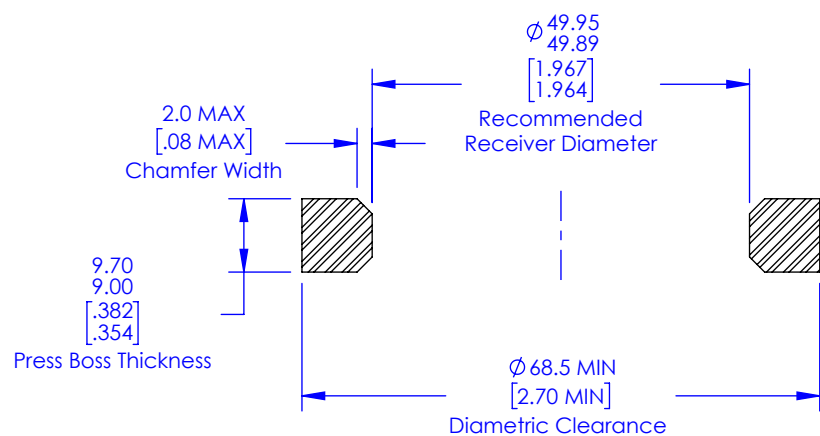
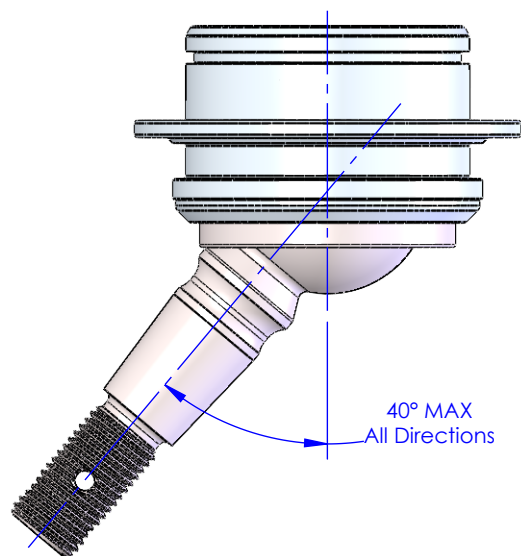


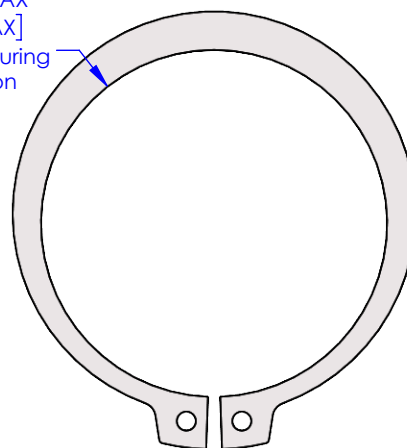
Recommended Press Boss Dimensions



Articulation Limit

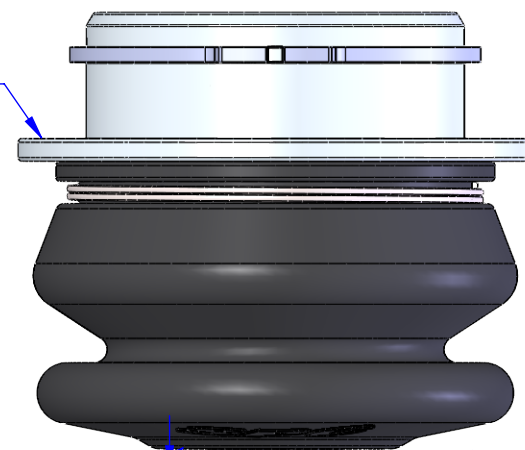


$\phi 50.50$ MAX
[1.988 MAX]
Expansion During
Installation

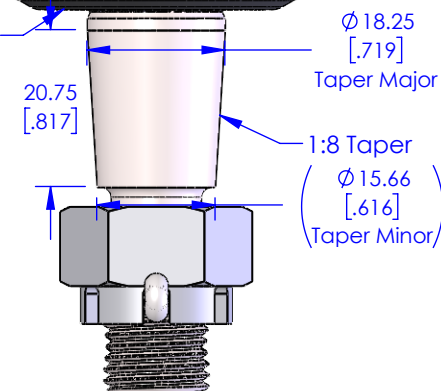


15221 Kit, Ball Joint Cartridge w/ Hardware

Press flange
shall be pressed
flush with press boss



Boot designed to be spaced
away from knuckle



Specialty Products Company®
Longmont, Colorado USA • www.specprod.com

PROPRIETARY AND CONFIDENTIAL

THIS DOCUMENT CONTAINS PROPRIETARY INFORMATION WHICH SHALL NOT BE REPRODUCED, TRANSFERRED TO OTHER DOCUMENTS, DISCLOSED TO OTHERS, USED FOR MANUFACTURING, OR ANY OTHER PURPOSE WITHOUT PRIOR WRITTEN PERMISSION FROM SPECIALTY PRODUCTS COMPANY

15221 Kit, Ball Joint Cartridge w/ Hardware

INFO SHEET

Rev. **A**

Mass (g): 669.77