

PART NO. 94220 Instruction Sheet

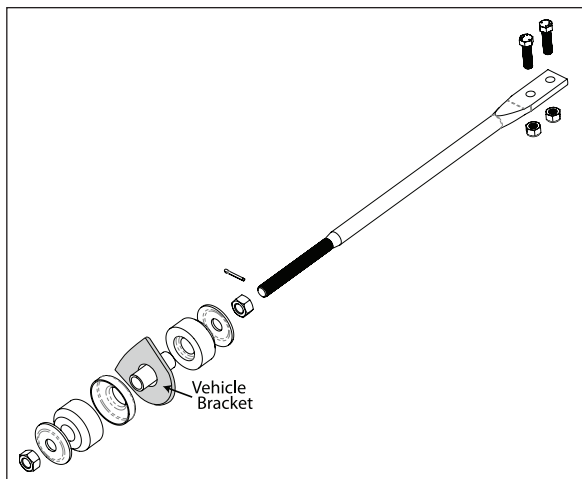
CLASSIC FORD ADJUSTABLE CASTER ROD

This part should only be installed by personnel who have the necessary skill, training and tools to do the job correctly and safely. Incorrect installation can result in personal injury, vehicle damage and / or loss of vehicle control..

1. Remove forward nuts, washer, and bushing from original strut rod. Remove the 2 bolts holding the factory strut rod to lower control arm and remove strut rod.

Note: Pay attention to location of steering stop. This will be reinstalled.

2. Using the OE strut rod as a guide, install a nut, washer, bushing, and inner sleeve on SPC strut rod as pictured in Diagram 1.
3. Using the inner nut, adjust the position of the bushing on strut rod to be roughly the same as on the OE strut rod.
4. Install strut rod into forward body mount, then install back of strut rod to lower control arm, placing steering stop in its former position. Install provided 7/16" nuts and bolts, leaving the two bolts holding strut rod to lower control arm slightly loose to ease adjustment.
5. Install stamped locator ring into body mount.
6. Install forward bushing, washer, and loosely tighten nut on strut rod.
7. Adjust caster to desired setting by threading the bushing assembly forward or rearwards on caster rod.



8. After setting caster, torque strut rod to control arm bolts to factory spec. Torque strut rod adjustment nut to 75 ft-lbs and install cotter pin.
9. Adjust toe recheck alignment and road test vehicle.

Always check for proper clearance between suspension components and other components of the vehicle.



Specialty Products Company®

P.O. Box 923 • Longmont, CO 80502 • (303) 772-2103 • Fax: (303) 772-1918
www.specprod.com • www.spcperformance.com • Email: info@specprod.com

Toll Free Technical Hot Line: 1-800-525-6505

ECN#1707

©2014 Specialty Products Company • Printed in U.S.A. • Form No. 982203 • Rev. 9/14