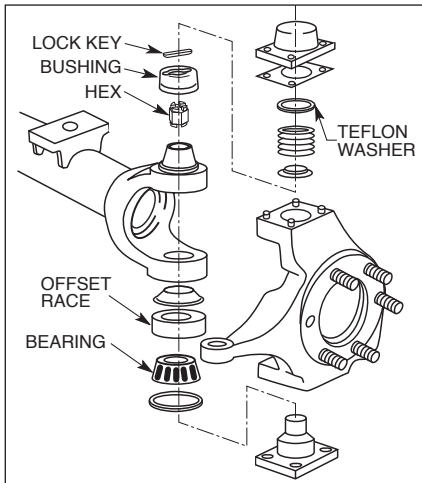


## **PART NO. 88950 SERIES** Instruction Sheet

# **DANA 60 AXLE - 1-1/2° CAMBER AND/OR CASTER KIT**

***This part should only be installed by personnel who have the necessary skill, training and tools to do the job correctly and safely. Incorrect installation can result in personal injury, vehicle damage and / or loss of vehicle control.***

1. Before beginning any alignment always check for loose or worn parts, tire pressure and odd tire wear patterns. Determine camber and/or caster change needed.
2. Raise vehicle and place safety stands under the axle. Remove tire and wheel assembly.
3. Using manufacturer's procedure, remove 4 WD lock-out hub assembly, brake caliper, rotor, spindle, and axle.
4. Disconnect tie rod from steering knuckle. Remove four bolts or nuts on top cap. Remove cap, spring and retainer washer. Remove top bushing.
5. Remove the spring from inside the cap and install the teflon washer inside and reinstall the spring.
6. Position the hex in the modified king pin for the desired camber and/or caster needed. For camber the hex must be positioned with one slot running from front to back. For caster the slot must be running side to side. If camber and caster is needed the slot must be running at an angle depending on amount of camber and caster needed.
7. Remove the four bottom bolts and cap. Remove the knuckle. Remove the seal, taking care not to damage the seal, if the seal is damaged it must be replaced. Remove bearing from the housing. Remove the bearing race and dust cup from the lower part of the housing by using a ball joint press or punch.
8. Reinstall dust cup into housing. Position the race with the thin part in the same position as the top bushing. For positive camber the thin part of the race faces inside toward the center from the vehicle, for negative camber the thin part of the race faces outward away from the vehicle. For positive caster the thin part of the race faces forward toward the front bumper, for negative caster the thin part of the race faces toward the rear bumper. **The offset race must be in the same position as the top bushing.** Install the new offset race, pack and install bearing, and seal. Replace the knuckle.



9. **Generously lube the outside surfaces of the bushing, install into knuckle.** For positive camber the thin part of the bushing faces inside toward the center of the vehicle, for negative camber the thin part of the bushing faces outward away from the vehicle. For positive caster the thin part of the bushing faces forward toward the front bumper, for negative caster the thin part of the bushing faces toward the rear bumper.  
**Always check for proper clearance between suspension components and other components of the vehicle.**
10. Reinstall the top and bottom caps, bolts or nuts. Torque to manufacturer's specification.
11. After the knuckle has been installed, reverse removal procedure.
12. Replace tire and wheel assembly, alignment equipment and recheck the alignment. Set the toe and road test the vehicle.



## **Specialty Products Company®**

P.O. Box 923 • Longmont, CO 80502 • (303) 772-2103 • Fax: (303) 772-1918  
www.specprod.com • www.spcperformance.com • Email: info@specprod.com  
**Toll Free Technical Hot Line: 1-800-525-6505**

©2005 Niwot Corp. dba Specialty Products Co • Printed in U.S.A. • Form No. 99950 • Rev. 1/05