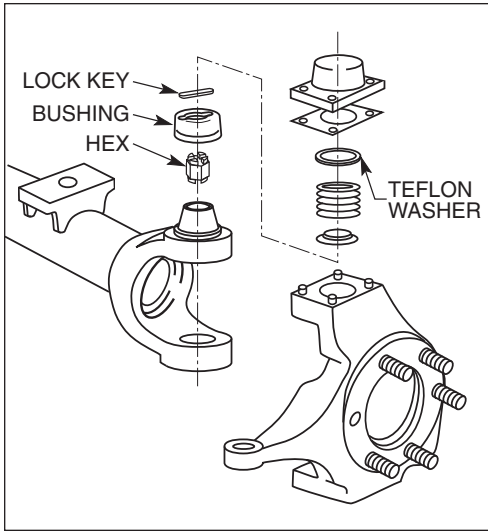


**DANA 60 AXLE 1<sup>st</sup> CAMBER/CASTER KIT**

*All products available from Specialty Products Company are intended for use by professional installers only.*



1. Before beginning any alignment always check for loose or worn parts, tire pressure and odd tire wear patterns. Determine camber and/or caster change needed.
2. Raise vehicle and place safety stands under the axle.
3. Remove four bolts or nuts from top cap. Remove cap, spring and retainer washer. Remove top bushing.
4. With the top cap off, remove the spring from inside the cap and install the teflon washer inside, reinstall the spring.
5. Position the hex in the modified king pin for the desired camber and/or caster needed. For camber the hex must be positioned with one slot in the top running from

front to back. For caster the slot must be running from side to side. If camber and caster is needed the slot must be running at an angle depending on amount of camber and caster needed.

6. **Generously lube the outside surfaces of the bushing, install into knuckle.** For positive camber the thin part of the bushing faces inside toward the center of the vehicle, for negative camber the thin part of the bushing faces outward away from the vehicle. For positive caster the thin part of the bushing faces forward toward the front bumper, for negative caster the thin part of the bushing faces toward the rear bumper .
7. Install the lock key into the hex and bushing. Replace the top cap, bolts or nuts. Torque to manufacturer's specification.

**Always check for proper clearance between suspension components and other components of the vehicle.**

8. Reinstall alignment equipment and recheck the alignment. Set the toe and road test the vehicle.

**Specialty Products Company<sup>®</sup>**

P.O. Box 923 • Longmont, CO 80502 • (303) 772-2103 • Fax: (303) 772-1918  
www.specprod.com • www.spcperformance.com • Email: info@specprod.com  
**Toll Free Technical Hot Line: 1-800-525-6505**