



Instruction Sheet  
JounceShock™ Rebuild Kit

*This part should only be installed by personnel who have the necessary skill, training and tools to do the job correctly and safely. Incorrect installation can result in personal injury, vehicle damage and / or loss of vehicle control.*

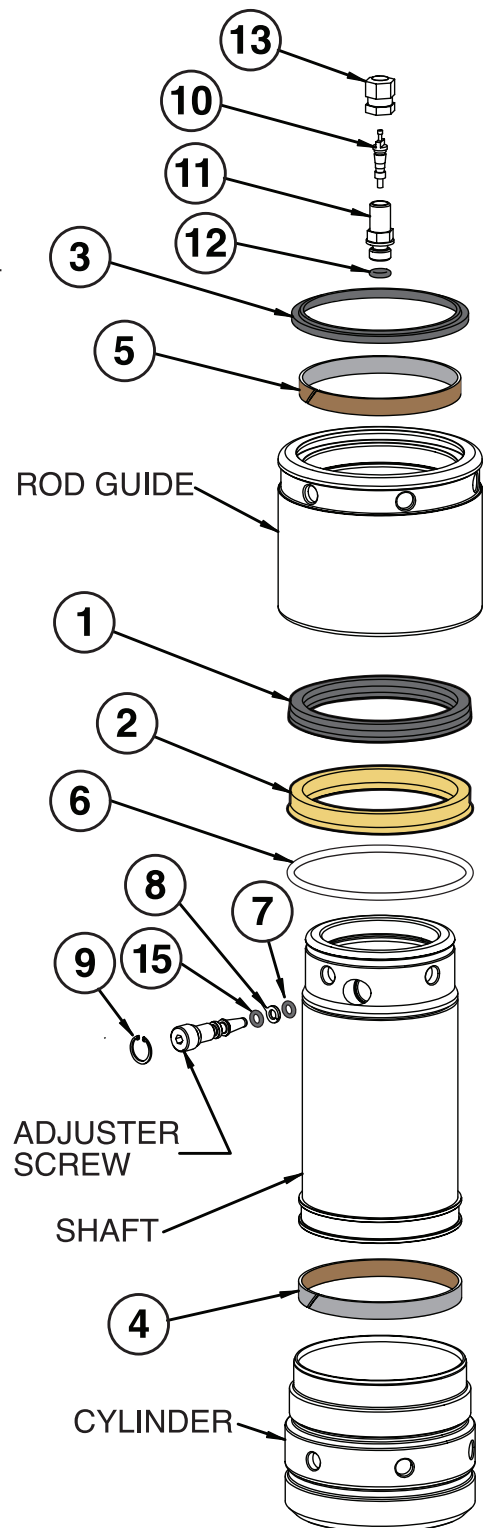
**WARNING: Safety glasses and procedures should be used at all times during the rebuild process.**

**Read instructions completely before beginning installation.**

**Required Tools:**

- Safety Glasses
- Bench Vise With Soft Jaws
- Adjustable pin-style spanner wrench, 1/4" Pin Diameter, 2.0"-3.0" Range (SPC Part No. 25220)
- 3/8" Socket, 3/8" Drive
- 11/32" Deep Socket, 3/8" Drive
- Graduated Cylinder 100 mL or Similar Measuring Container
- Dead Blow Or Rubber Mallet
- Torque Wrench, 84 lb-in, 7 lb-ft Range
- 3/8" Drive Ratchet
- Foaming Glass Cleaner Or Residue Free Solvent
- Lint Free Shop Towels
- Compressed Nitrogen, Regulator
- Air Chuck / (Aircraft Strut Quality Is Best)
- Schrader Valve Core Tool
- Snap Ring Pliers (.038" Dia Tip, Ref Snap-On Part Number Sprc 3800)
- Medium Strength Thread Locking Compound (Ref Loctite # 242 Or 248 Quickstix)
- 1/8" Hex Key
- Pick Set
- 1/8" Punch
- Oil Collection Container
- Funnel, 1/4" Tip Dia Max

<b>Parts List:</b>			
#	Description	25712 Qty.	25713 Qty.
1	Outer Main Seal	1	4
2	Inner Main Seal	1	4
3	Wiper Seal	1	4
4	Piston Wear Band	1	4
5	Rod Guide Wear Band	1	4
6	Rod Guide O-Ring	1	4
7	Adjuster O-Ring (Clear)	1	4
8	Backup Ring	1	4
9	Internal Snap Ring (.375 Bore)	1	4
10	Valve Core	1	4
11	Valve Body	1	4
12	Valve Body O-Ring	1	4
13	Valve Cap	1	4
14	Valve Extension (Not Shown)	1	4
15	Adjuster O-Ring (Black)	1	4



## Part No. 25712 & 25713 Instruction Sheet

### JounceShock Rebuild Kit - Continued

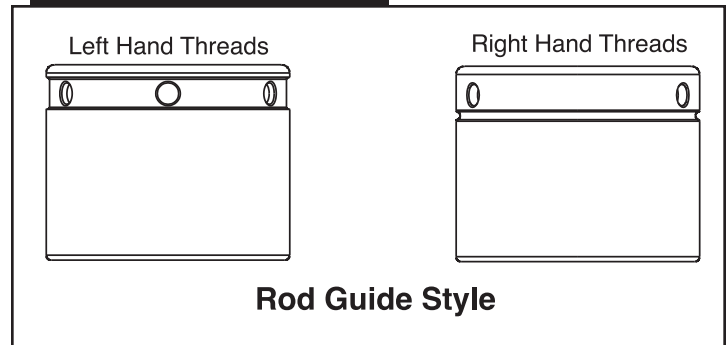
#### Rebuild process:

1. Turn unit upside down so Schrader valve is pointing up.
2. Remove yellow Schrader cap.
3. Release internal pressure carefully by depressing the valve core.
4. Unscrew and remove Schrader valve core using the valve core tool.
5. Remove small snap ring from rebound adjuster bore hole. Note position of adjusting screw by screwing it in clockwise until it seats, counting the number of turns. Record this number.
6. Now remove the adjuster screw from the shock body (rotating counter clockwise).
7. While holding the cylinder in a soft jawed vise unscrew the rod guide from the cylinder using the pin wrench. See Figure 1 for rotation direction.
8. Invert the shock and drain the oil from the shaft and cylinder.
9. Remove the rod guide from the shaft. Dead blow hammer may be required.
10. Remove all O-rings, seals, and wear bands from the rod guide housing.
11. Install new O-rings, seals, and wear bands in appropriate locations. Make sure the new parts are oriented as illustrated. Make sure to lubricate all O-rings, seals and wear bands during assembly.

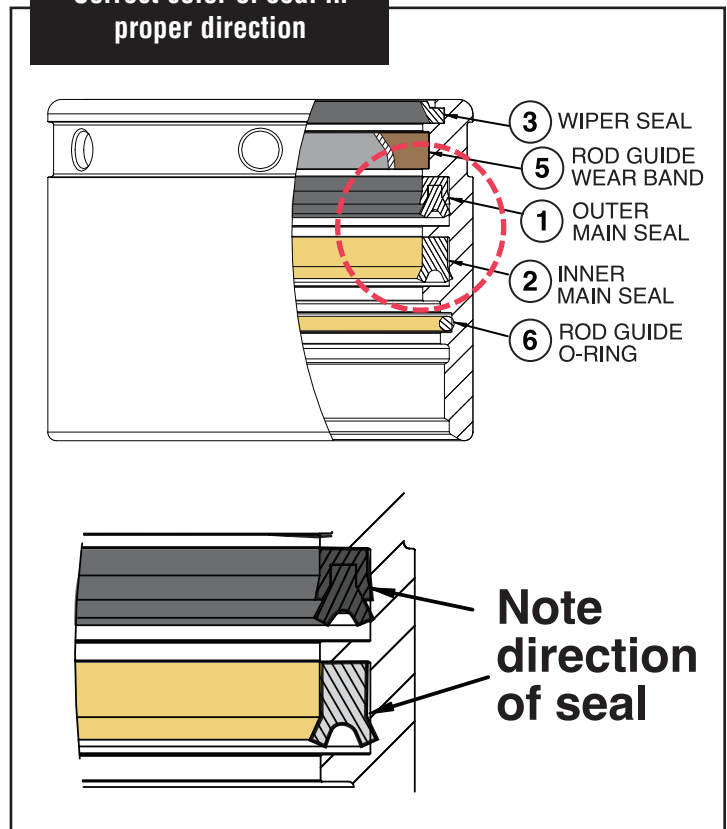
**Note: Make sure the correct color of seal is in the proper location and is installed in the correct direction as illustrated in Figure 2.**

12. Install the rod guide on the shaft.
13. Accurately measure out new shock oil (7wt etc.) using graduated cylinder or other measuring device.  
For 1.5" Travel JounceShock oil fill = 160 mL  
For 3.0" Travel JounceShock oil fill = 244 mL
14. Pour half of the oil into the cylinder.
15. Assemble the shaft into rod guide and thread onto cylinder using medium strength thread locker on the cylinder threads.
16. Install the rebound adjuster screw using new O-rings.
17. Turn shock upside down and add the remaining oil into the shaft through Schrader port hole.
18. Install Schrader valve body into Schrader port using medium strength thread locker. Torque to 6 lb-ft (72 lb-in)
19. Pressurize with nitrogen to desired level using Fill Extension (PN 25515). Refer to JounceShock installation instruction sheet for proper charging procedure and pressures.
20. Install Schrader cap and snug tight by hand.
21. Check settings on rebound adjuster.

**Figure 1**  
Rotation Direction



**Figure 2**  
Correct color of seal in proper direction



*There is no warranty stated or implied due to the inability to monitor the part's modification, installation, and use, except that Specialty Products Company warrants its products to be free from defects in material and workmanship for 90 days after purchase under normal use. In that case, parts returned must be determined by Specialty Products to be defective and Specialty Products's obligations under that warranty are solely limited to repairing or replacing, at its option, any part proven defective.*

*Final determination of the suitability of the parts for use contemplated by the buyer is the sole responsibility of the buyer. Specialty Products Company shall not be liable for any special, direct, indirect, incidental, or consequential damages that might be claimed as a result of the failure of any part, including claims for delay, loss of profits or labor. Specialty Products Company shall not be liable for any damage or injury to persons or property resulting from improper installation or misuse of any part subject to this warranty. There are no other warranties expressed or implied extending beyond those set forth above.*



**Specialty Products Company®**

P.O. Box 923 • Longmont, CO 80502 • (303) 772-2103 • Fax: (303) 772-1918 • www.specprod.com • Email: info@specprod.com

ECN#1866

Toll Free Technical Hot Line: 1-800-525-6505

©2015 Niwot Corp. dba Specialty Products Co.® • Printed in U.S.A. • Form No. 98712 • Rev. 6/15